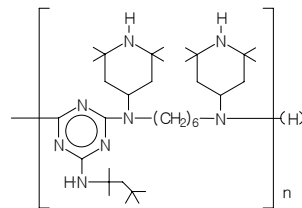


SONGLIGHT™ 9440

Technical Information

- 1. Components** Poly[[6-[(1,1,3,3-tetramethylbutyl)amino]-s-triazine-2,4-dinyl][(2,2,6,6-tetramethyl-4-piperidyl)imino] hexamethylene[2,2,6,6,-tetramethyl-4-piperidyl) imino]]



CAS No : 70624-18-9 Mw : 2000 ~ 3100

The CAS No. 70624-18-9 is chemically identical to CAS No. 71878-19-8.

| | | |
|----------------------|----------------------------------|---------------|
| 2. Properties | Softening Point (°C) | 100.0 ~ 135.0 |
| | Ash (%) | Max. 0.10 |
| | Volatile Loss (%) | Max. 1.0 |
| | Color of solution 425nm (%) | Min. 92.0 |
| | Color of solution 450nm (%) | Min. 95.0 |
| | Molecular weight (\bar{M}_n) | 2000 ~ 3100 |

3. Characteristics & Usages

- * SONGLIGHT™ 9440 is a polymeric hindered amine light stabilizer (HALS) of N-H type that protects polymers from degradation due to ultraviolet radiation and long term heat aging.
- * Exhibits extremely low volatility, high thermal stability and excellent compatibility with many substrates and can be used in PP, LDPE, HDPE, XPE, EVA and PP blends with elastomers.
- * The high molecular weight and polymeric structure make it particularly effective for use in thin section articles such as fiber, tape, film.
- * Can be used in combination with phenolic & phosphite antioxidants, lower molecular weight HALS, and UVA's to optimize performance in outdoor use.
- * Use with Sulfur-containing additives such DSTDP or DLDTDP can have a negative influence on the effectiveness of SONGLIGHT™ 9440.
- * For additional information please consult the Material safety Data Sheet.

4. Physical Form SB (Semi Bead)

5. Packing unit 25Kg Carton Box, 50Kg Fiber Drum